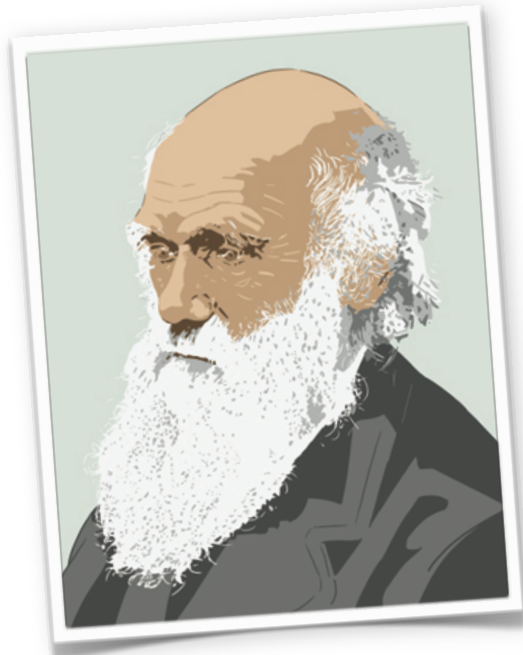


Pre-Reading Warm Up Questions ☀

1. What adjective can be used to describe things related to Charles Darwin?
2. What do you think Charles Darwin's passion was as a child?
3. Do you adapt well to your surroundings?
4. Why do species become extinct? How long will humans survive on this planet?
5. What do you think Charles Darwin thought about on his death bed?



COMPREHENSION ✍

A. True or False. Read the statements below. If the statement is true, write T beside the sentence. If it is false, write F. If it is false, correct the information.

1. Charles Darwin's father was a doctor.
2. Charles Darwin grew up in South America.
3. Darwin spent 5 years traveling with the H.M.S. Beagle.
4. Darwin believed that humans would go extinct before apes.
5. On his death bed, Darwin told everyone not to believe in God.

Charles Darwin

Charles Darwin was born in England over 200 years ago. He is known best for his theory of **evolution**. Darwin wasn't always a scientist. Like many of us, he didn't know what he wanted to be when he grew up! He started out by following in his father's footsteps. When medical school didn't work out, he decided to be a **clergyman**. Eventually he turned to science. This, after all, had always been Darwin's **passion**. As a child, he loved collecting notes about insects and plants. Darwin also loved to experiment.

In 1831, Darwin joined the Royal British Navy for a world-wide scientific **expedition** on the H.M.S Beagle. His role as resident **naturalist** at sea was a dream come true. The 5 year exploration took Darwin down the coast of South America and over to the Galapagos Islands in the Pacific Ocean. During this trip, Darwin observed, **dissected**, and collected a variety of **fossils** and species.

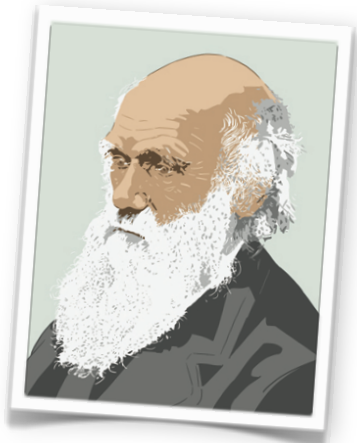
This trip of a lifetime resulted in Darwin's theory of evolution. Darwin used his notes from the trip to form a hypothesis about living things. He **hypothesized** that a single species evolves over millions of years. Each species has to adapt to its surroundings. The gradual change in characteristics results in many different species. A species that is unable to adapt to its surroundings becomes **extinct**. Darwin used the term "natural selection" to describe this process. He published his theory of shared ancestry in a book in 1859. The book was called "On the Origin of the Species". During this time, philosopher Herbert Spencer **coined** the phrase "survival of the fittest".

The "Origin of the Species" was difficult for religious people to **digest**. Darwin was not only talking about insects, birds, and mammals. He was also talking about mankind. Darwin claimed that humans evolved from apes. This went against the story of **creation** in the Bible and other religious texts. Remember, this was a time when religion was rarely questioned. Explorers were still **charting** the world! Despite his theory, Darwin refused to comment or argue about the **existence** of God.

Today some scientists prefer to use the term "fact" rather than "theory" of evolution. Others have a Darwinian theory of their own. They say Darwin changed his mind on his death bed. Did Darwin try to make up with God before he died? Most people agree that the death bed theory is a **myth**. Despite his poor health, Darwin was always passionate about his work. Did you have a passion when you were a child?

B. Practice asking and answering the following questions with your partner. Then write the answers in complete sentences.

1. Where was Charles Darwin born?
2. What careers did Darwin consider in his early years?
3. What did Darwin love to do as a child?
4. How long was the H.M.S. Beagle at sea?
5. What was Darwin's role during the sea voyage?
6. Why does the reading mention Herbert Spencer?
7. How did religious people feel when "On the Origin of the Species" was released?
8. What do some people believe Darwin said before he died?



VOCABULARY REVIEW 

A. Match the words on the left with the correct meaning on the right.

- | | |
|----------------------|--|
| _____ 1. evolution | a. the state of being |
| _____ 2. clergyman | b. a long adventure with a specific purpose |
| _____ 3. passion | c. priest; religious leader |
| _____ 4. expedition | d. a strong interest that drives a person in a certain direction |
| _____ 5. naturalist | e. to cut into a dead organism and investigate its parts |
| _____ 6. dissect | f. a person who studies the history of nature |
| _____ 7. fossils | g. to give an official name or phrase to a new concept |
| _____ 8. hypothesize | h. to make an educated guess |
| _____ 9. extinct | i. no longer living in our world |
| _____ 10. coin | j. the buried remains of plants and animals from long ago |
| _____ 11. digest | k. a belief or story that is not based on fact |
| _____ 12. creation | l. the beginning of humanity |
| _____ 13. chart | m. to explore and make maps for a region |
| _____ 14. existence | n. the gradual adaptation of a species into a new species |
| _____ 15. myth | o. to take in and process |

Did you know...?

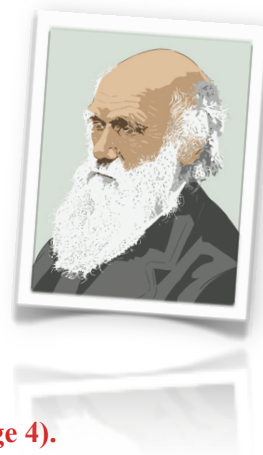
Charles Darwin suffered from many health problems in his lifetime. He was in bed for months at a time for forty years. His symptoms included dizziness, vomiting, blisters, anxiety, and depression. His illness was never diagnosed.

B. Choose the right word from the left column above to complete the following sentences.

1. Nobody knows exactly why the dinosaurs became _____.
2. Do you know who _____ the word "Internet"?
3. Her true _____ was singing, though she became a writer first.
4. Before explorers began to _____ the world many thought it was flat.
5. It was difficult for Michael Jackson lovers to _____ the news of his death.
6. When the clergyman's daughter grew up she began to question the _____ of God.
7. In high school science class we had to _____ a mouse.
8. Some people think that the story of creation is a _____. Others say it is based on fact.

DISCUSS 

1. Look at the symptoms Charles Darwin had during his lifetime. What illness do you think he might have had?
2. Is it possible to believe in God (or any intelligent designer) and evolution?
3. If you could interview Charles Darwin, what questions would you ask him?



ANSWER KEY

Please note:

The reading for this topic is also available in full-page format at the end of the lesson (page 4).

COMPREHENSION QUESTIONS

A. True or False

1. T
2. F He grew up in England.
3. T
4. F He said humans were descendants of apes.
5. F Some people believe that Darwin tried to make peace with God on his death bed.

B. Written Answers

1. Darwin was born in England.
2. Darwin contemplated being a physician and a clergyman before turning to science.
3. As a child Darwin love to investigate nature.
4. The H.M.S. Beagle traveled for 5 years.
5. Darwin's role during the voyage was "naturalist".
6. The reading mentions Herbert Spencer because this philosopher coined the related term "survival of the fittest" . (Many think it was Darwin.)
7. Religious people found it difficult to accept this new information about science. It disputed the stories in the Bible and other religious texts.
8. Some people think Darwin changed his mind about his theory of evolution right before he died. They think he wanted to make peace with God.

VOCABULARY REVIEW

A. Match the words

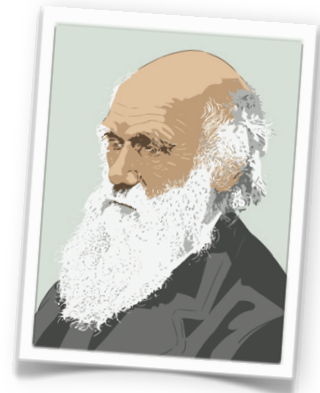
1. n
2. c
3. d
4. b
5. f
6. e
7. j
8. h
9. i
10. g
11. o
12. l
13. m
14. a
15. k

B. Choose the right word

1. extinct
2. coined
3. passion
4. chart
5. digest
6. existence
7. dissect
8. myth

Charles Darwin

Charles Darwin was born in England over 200 years ago. He is known best for his theory of **evolution**. Darwin wasn't always a scientist. Like many of us, he didn't know what he wanted to be when he grew up! He started out by following in his father's footsteps. When medical school didn't work out, he decided to be a **clergyman**. Eventually he turned to science. This, after all, had always been Darwin's **passion**. As a child, he loved collecting notes about insects and plants. Darwin also loved to experiment.



In 1831, Darwin joined the Royal British Navy for a world-wide scientific **expedition** on the H.M.S Beagle. His role as resident **naturalist** at sea was a dream come true. The 5 year exploration took Darwin down the coast of South America and over to the Galapagos Islands in the Pacific Ocean. During this trip, Darwin observed, **dissected**, and collected a variety of **fossils** and species.

This trip of a lifetime resulted in Darwin's theory of evolution. Darwin used his notes from the trip to form a hypothesis about living things. He **hypothesized** that a single species evolves over millions of years. Each species has to adapt to its surroundings. The gradual change in characteristics results in many different species. A species that is unable to adapt to its surroundings becomes **extinct**. Darwin used the term "natural selection" to describe this process. He published his theory of shared ancestry in a book in 1859. The book was called "On the Origin of the Species". During this time, philosopher Herbert Spencer **coined** the phrase "survival of the fittest".

The "Origin of the Species" was difficult for religious people to **digest**. Darwin was not only talking about insects, birds, and mammals. He was also talking about mankind. Darwin claimed that humans evolved from apes. This went against the story of **creation** in the Bible and other religious texts. Remember, this was a time when religion was rarely questioned. Explorers were still **charting** the world! Despite his theory, Darwin refused to comment or argue about the **existence** of God.

Today some scientists prefer to use the term "fact" rather than "theory" of evolution. Others have a Darwinian theory of their own. They say Darwin changed his mind on his death bed. Did Darwin try to make up with God before he died? Most people agree that the death bed theory is a **myth**. Despite his poor health, Darwin was always passionate about his work. Did you have a passion when you were a child?